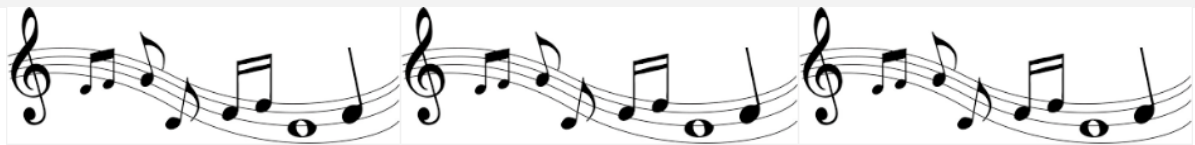


SCHOOL NEWS

Musical Opportunities | RSPB Birdwatch | Cluster Schools Collaboration

Singing

In school, we are taking part in the Greater Manchester Hub Singing Challenge for 2016. We are working with other areas such as Trafford, Tameside, Salford, Bolton and Bury to unite in song on 8th March. A song has been specially written for this event and is designed to promote self-confidence, ambition and achievement. Manchester has been named as the European City of Science in 2016 and the song, 'A Certain Kind Of Imagination', celebrates many of the innovations and scientists from Greater Manchester. We will endeavour to get the song onto the school website so the children can share it at home. As well as complementing our music curriculum, this event will also link to our Citizenship and Modern British Values teaching which we are now required to deliver as part of the new curriculum.



Choir Opportunities!!

We have a school choir who meet at 8.15am on a Thursday morning. We are working towards a performance in the second summer half term. It is still possible to join the choir if your child is in Year 2 up to Year 6 and they are interested. Please phone the office if you would like your child to be added to the register. Please note, that after half term there will be no further opportunity to join the choir as rehearsals will be well under way by then.

There are also singing opportunities which are provided by Stockport Music Service. If your child is a keen singer, they may be interested in joining Stockport Young Voices (Years 1 and 2) who meet on Mondays from 4 - 4.50pm or Stockport Junior Voices (Years 3 to 6) who meet from 5 - 6.15pm. Exciting opportunities arise from singing in these groups such as performing at the Bridgewater Hall in Manchester and the Royal Albert Hall in London. If you are interested, pick up a leaflet from our reception area.



Big Schools' Birdwatch

4 Jan-12 Feb 2016

Our Eco Club have been busy partaking in the Big Schools' Birdwatch this week. This is the RSPB's annual event where a bird population count takes place to give us an idea of which species are thriving in different places. Our school twitchers' top spots were blackbirds, crows, sparrows and pigeons! Some chaffinches and 4 wrens were also spotted. Their numbers have been submitted to the RSPB.



Joint working with local schools

Next week all our teaching staff will be travelling to Bolshaw Primary School for our staff meeting. Other schools in our local cluster such as Outwood, Gatley, Lum Head and Meadowbank will also be joining us there. The purpose of the meeting is for all the teachers to meet in year groups and moderate assessments in English and Maths. As a cluster, we strive to maintain consistency across the schools. Ensuring that judgements relating to children meeting National Standards are consistent in every year group, is an example of this.

Disco!!

Many thanks for the tremendous support for the school disco. Tickets have sold brilliantly and I'm sure the children are in for a fantastic time this evening.

Towards the end of this week, there has been a notable improvement in the punctuality of children being picked up. Thank you for your cooperation with this and enabling the end of the day to run more smoothly.

Kind regards,

Cathy Beddows and the Etchells staff

